

Data Connector | Petrel®

 **PaleoScan™** 2016

Build The Earth Model

Release | Notes



Copyright Notice

All rights reserved. No part of this document may be reproduced, stored in a retrieval system, or translated in any form or by any means, electronic or mechanical, including photocopying and recording, without the prior written permission of Eliis SAS, 187 rue Helene Boucher, 34170 Castelnau-le-Lez, FRANCE.

Disclaimer

The use of this product is governed by the PaleoScan™ Software License Agreement. Eliis makes no warranty, expressed, implied, or statutory, with respect to the product described herein and disclaims without limitation any warranty of merchantability or fitness for a particular purpose. Eliis reserves the right to revise the information in this manual at any time without notice.

Contact

For any information request, you can contact us

Web: www.eliis.fr

France

Eliis S.A.S
Parc Mermoz
187, rue Hélène Boucher
34170 Castelnau-le-Lez

Phone: +33 (0) 4.67.41.31.16

Email: contact@eliis.fr

USA

Eliis Inc.
One BriarLake Plaza, Suite 150
2000 W. Sam Houston Pkwy
Houston, Texas 77042

Phone: +1 281 404 1515

Email : contact-us@eliis.fr

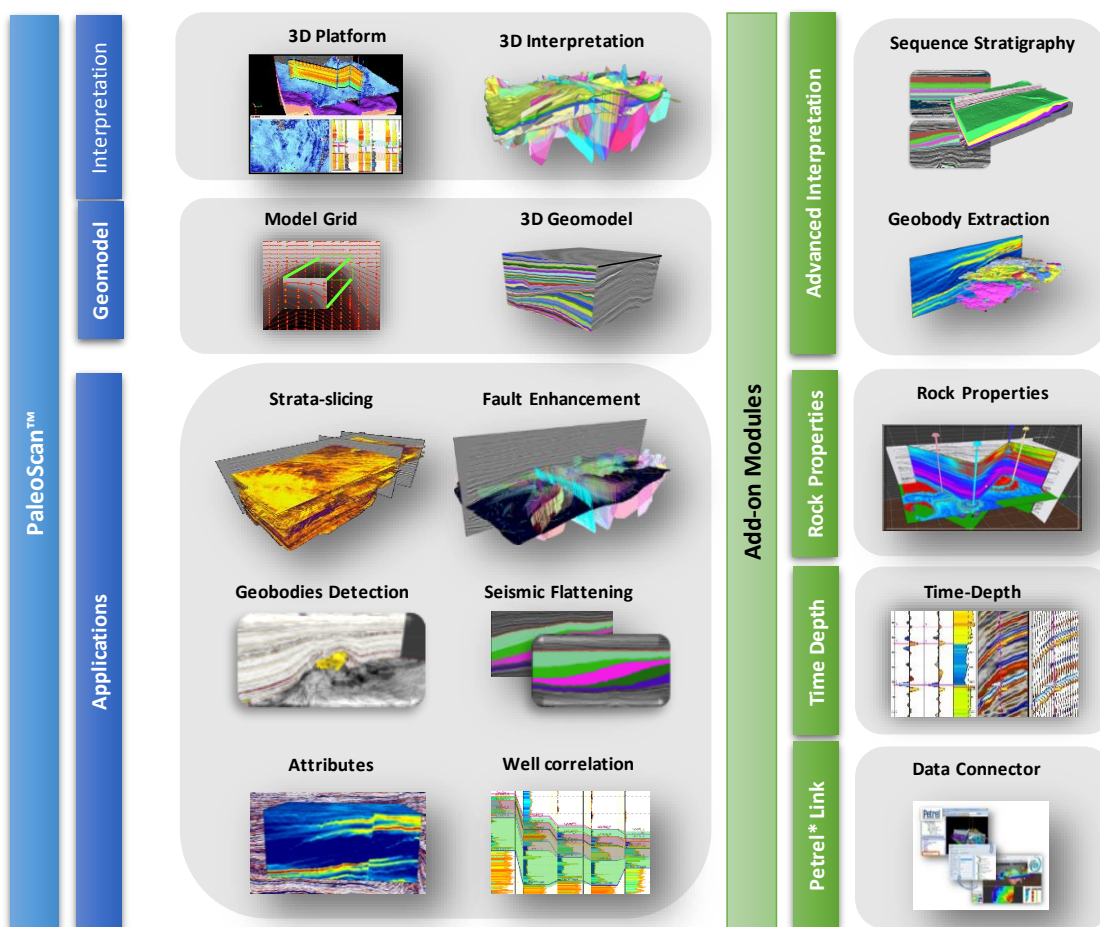
PaleoScan™ 2016



PaleoScan™ 2016 is a new generation of 3D seismic interpretation software, where geoscientists build a geological model while interpreting seismic volumes. With this new release, Eliis continues to innovate in seismic interpretation and brings more tools to interpret larger seismic data sets, with added speed and precision.

This document lists all the new features upgrades and corrections implemented in PaleoScan™ Data Connector 2016.

The 2016 release brings more options to complete the workflow from the exploration to the reservoir characterization, with a suite of various applicative modules for sequence stratigraphy, automatic geobodies extraction, rock properties modeling, colored inversion and seismic to well tie at a sub-seismic resolution. It also offers new functionalities such as a multi-z picking tool, spectral blueing and RGB blending. Parallel computing has also been upgraded with the latest multi core technologies.



*Trademark of Schlumberger

PaleoScan™ Data Connector 2016.3

PaleoScan™ Projects Management

Feature	Description
Read Only Project(s)	In case of multi users, a warning message appears to inform the user about the risk of data loss or corruption.

Petrel® to PaleoScan™

Feature	Description
Horizons: Attributes	Attribute(s) mapped on Petrel® horizon(s) are exported to the PaleoScan™ database.
Seismic Logs	The synthetic log(s) stored as Seismic log(s) type(s) can now be exported to PaleoScan™.
Color Bars	Color Bar(s) stored in Templates folder can be exported to PaleoScan™ (Other tab of the project browser).
2D Lines	Arbitrary line(s) and Volume direction(s) (Inline(s)/Xline(s)) can be transferred as 2D Line(s) in the PaleoScan™ database.
Triangle Mesh Objects	Triangle Mesh Objects can be exported to the PaleoScan™ database as Geobody(ies).

PaleoScan™ to Petrel®

Feature	Description
Horizons: Attributes	Attribute(s) mapped on PaleoScan™'s horizon(s) are now imported into Petrel®.
Markers	Marker(s) stored in PaleoScan™ database can be imported into Petrel® into a Well Tops folder.
Checkshot	Checkshot(s) stored in PaleoScan™ database are imported during the Well(s) transfer as velocity function.
Multi-Z	Multi-Z object(s) generated in PaleoScan™ can now be imported as Triangle Mesh Object(s) into Petrel®.
Color Bars	Custom color bar(s) created in PaleoScan™ can be transferred in Template folder into Petrel®.
2D Lines	2D Line(s) can be transferred as arbitrary line(s) into Petrel®.

Licensing

The PaleoScan™ Data Connector 2016.3 is included as an add-on module to PaleoScan™ 2016. It can be downloaded from Eliis web site. A personal user account is required. If you do not have a login and password to access Eliis extranet, you can fill up this [form](#).



Eliis provides you a [free 30-day temporary license](#) to evaluate PaleoScan™ 2016 including the Petrel® plug-in. The temporary license will give you a full access to the software with all add-on modules.

Compatibility

The PaleoScan™ Data Connector 2016.3 is only compatible with Petrel® 2014 and PaleoScan™ 2016:

PaleoScan™ Data Connector 2016.3	
Required PaleoScan™ versions	Required Petrel® versions
PaleoScan™ 2016 (64-bit) and above	Petrel® 2014 (64-bit)