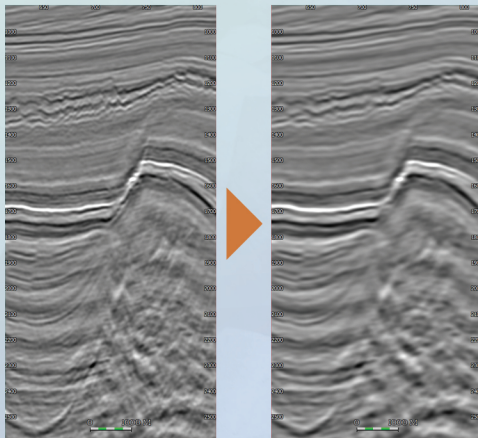


### Smoothing 2D attributes

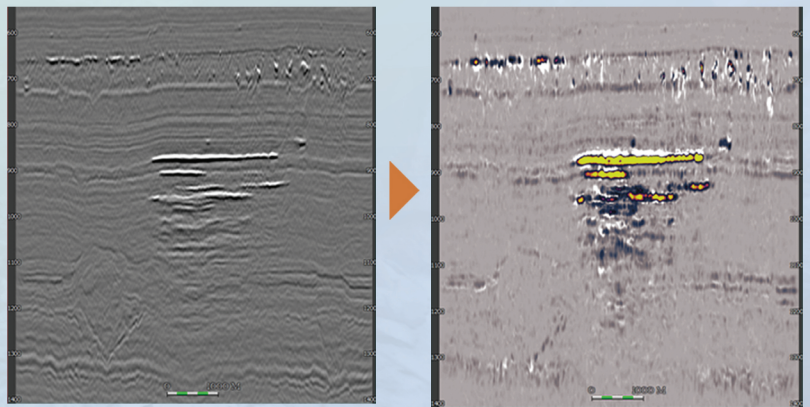
- ▲ Box smoothing
- ▲ Gaussian smoothing
- ▲ Box smoothing property in display properties



Useful to condition 2D lines and removes noise effects.

### AVO attributes

- ▲ R-squared
- ▲ Synthetic angle stack
- ▲ ERG



Enhanced Restricted Gradient attribute highlights AVO class III anomalies.

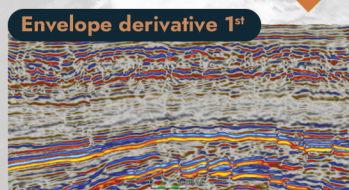
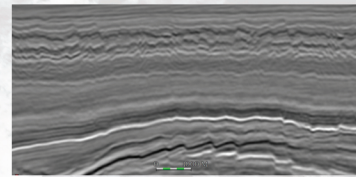
### Envelope derivative

#### 2 new Instantaneous attributes:

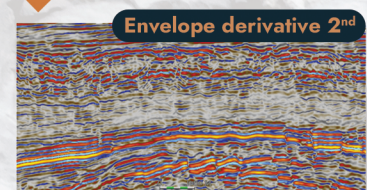
- ▲ Envelope derivative 1<sup>st</sup>
- ▲ Envelope derivative 2<sup>nd</sup>

#### Available in:

- ▲ Volume:
  - ▲ Attribute computation
  - ▲ Real-Time attribute
- ▲ 2D attribute:
  - ▲ Attribute computation
  - ▲ 2D Real-Time attribute



A weak event can be associated to absorption effects and a strong event indicates the presence of sharp interfaces.



Better identification of all interfaces within the seismic bandwidth even for weak events, reveal major changes in lithology and depositional environments.

### Amplitude balancing

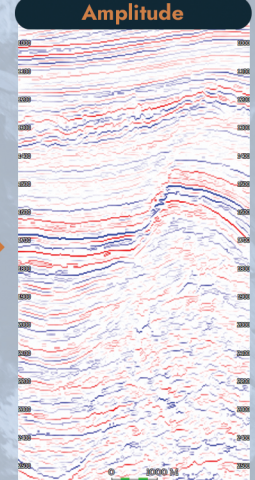
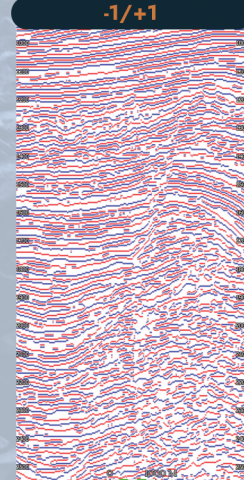
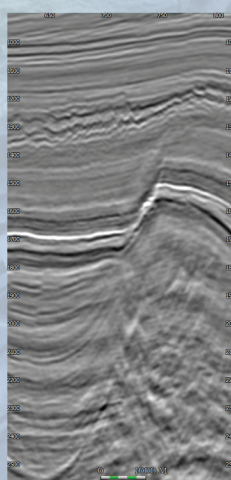
#### Polarity attribute with options:

- ▲ -1/+1
- ▲ Amplitude

#### Available in:

- ▲ Attribute for volume & real time
- ▲ Attribute for 2D line & real time
- ▲ Horizon attributes mapping
- ▲ Horizon Stack creation
- ▲ Horizon Stack duplication

Enhances the continuity of reflections

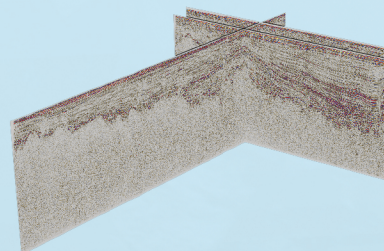
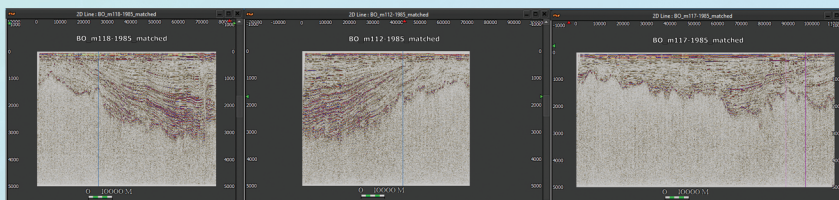
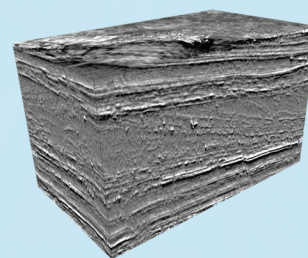




# Optimization

## Visualization

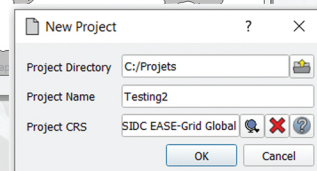
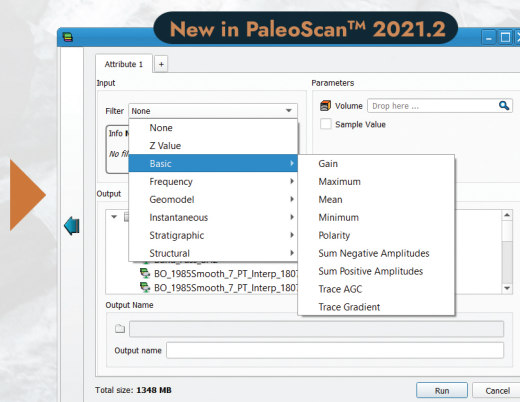
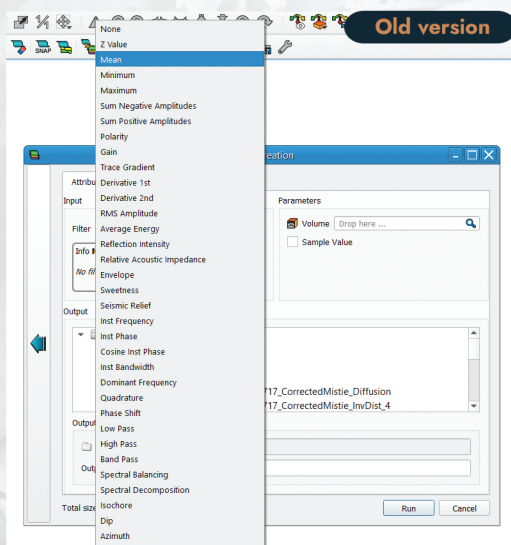
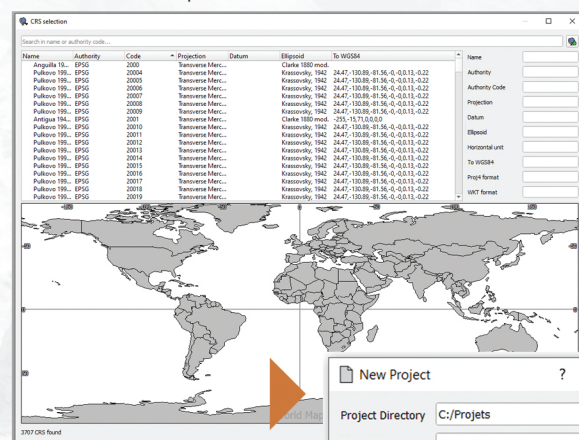
- ▲ **Color bar updates:**  
Optimization for CPU usage and update for seismic attribute
- ▲ **Axes display** in viewer improved
- ▲ **Alpha Blending viewer:** new reset option
- ▲ **Model-Grid Horizon name** is now displayed in Horizon Viewer
- ▲ **2D Lines and Volumes** have now object names displayed in 2D viewer



## Interface

- ▲ **CRS Editor table** can be ordered by object units
- ▲ Option for **SEG-Y (2D/3D) import improved**
- ▲ Export folder: **updated location is now saved**
- ▲ **Model-Grid constraint tool** revived
- ▲ **Object Properties** display is now available for: GeoTiff, Multi-Z, 3D Horizon and Horizon Stack, Flattened Volume, Flattened Model, Real-Time Attributes
- ▲ **Horizon Stack attribute display:**  
organized in alphabetic order by attribute type

Select CRS option



## OpenWorks® Connector

Speed-up your data transfer from and to OpenWorks®

PALEOSCAN™



OpenWorks®

OpenWorks® is a trademark of Halliburton

Licensing

New OpenWorks® Connector license management: Automatic connection to OpenWorks® license from PaleoScan™.

Licensing

Improve crash management by adding a specific dump file to avoid overwriting PaleoScan™ file.

OpenWorks® Connector

Optimization of the speed process for the OpenWorks® connector on large database.